



Notice Concerning Acquisition of Shares of Chusin Construction Co., Ltd.

Konishi Co., Ltd.

Konishi Co., Ltd., hereby announces that on January 6, 2023, we acquired the shares of Chusin Construction Co., Ltd., making it into a subsidiary of Konishi Co., Ltd. Details are as follows.

1. Reason for the acquisition of shares

We are now in an age of “prolonging the life of stock,” in which social capital stock, such as bridges, roads, and tunnels, and building stock, such as buildings and condominiums, are repaired, renovated, and maintained for longer periods of time. Whether it’s with the adhesives and sealants suitable for the repair and renovation of civil engineering buildings handled by the “Bond Business”, or our unique bonding methods for exterior wall repair, seismic reinforcement, and surface protection, the entire Konishi Group is contributing to the creation of a prosperous and secure society through our products and services being utilized in the “Construction Business”, which consists of affiliates.

Bycombining the product and construction method development capabilities of the “Bond Business” in the civil engineering and construction fields with the technical capabilities of the “Construction Business”, we believe that we can contribute to extending the life of social capital stock, such as bridges and roads, and that the demand for such maintenance is expected to continue to increase in the future. As such, we are strengthening the “Construction Business” as a pillar of our growth strategy.



["Bond Business" Civil Engineering Products]



["Construction Business" Project Example]



[Showabashi Bridge]

Since its establishment in Nagano Prefecture in 1920, Chusin Construction Co., Ltd., has been engaged in civil engineering and construction for more than a century and deeply rooted in the region, and has a track record in a wide range of construction fields, including bridge-related construction. By utilizing its solid technology and comprehensive capabilities to carry out construction projects that will remain a symbol of the town for generations to come, they have established themselves as a

comprehensive construction company indispensable to the region. Under the slogan of “Chusin is Focused on ‘People’,” they are constantly striving to improve the resourcefulness of their employees and respond to difficult customer needs arising from various construction projects with reliable technology. Showabashi Bridge, constructed by Chusin Construction in 1952, was designated as a civil engineering heritage site by the Japan Society of Civil Engineers and Chusin Construction has achieved excellent construction records.

Through this share acquisition, the Konishi Group will utilize its sales network and construction methods, including those for repairs, renovations, earthquake resistance, and reinforcement, in

cooperation with Chusin Construction, with the aim of contributing to the stable development and growth of the “Construction Business” and increasing earnings.

2. Overview of the subsidiary (Chusin Construction Co., Ltd.)

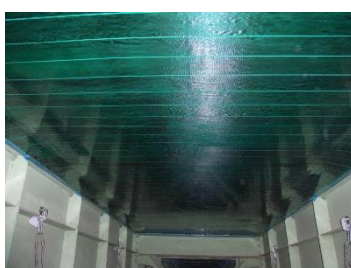
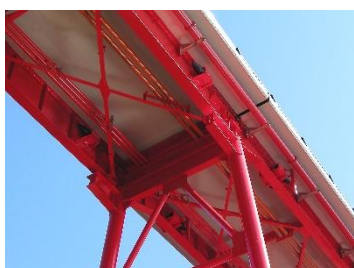
(1) Company Name	Chusin Construction Co., Ltd.
(2) Address	234 Oaza Kamitokuma, Chikuma, Nagano
(3) Name and title of representative	President and Representative Director Kazutaka Suwa
(4) Business description	Design and construction of construction and civil engineering works
(5) Capital stock	¥20 million
(6) Sales	¥2.688 billion (fiscal year ended December 2021)
(7) Date of establishment	August 10, 1920
(8) Date of incorporation	June 11, 1944

※The impact of this share acquisition on Konishi’s consolidated financial results is expected to be immaterial.

3. About Konishi Co., Ltd.

Konishi started its business back in 1870 as a pharmaceutical trader. Following that, it expanded its business to the sales of western liquors and industrial chemicals and transformed itself into a company dealing with chemistry while working to meet customer’s requests and the demands of the society, as observed in the development of the Bond synthetic adhesives in 1952. While, at the present time, inheriting the “Bond business” as a manufacturer engaged in the production and sales of the synthetic adhesive Bond and other products and also inheriting the wholesale business that started as the foundation of our business, we are attempting to further expand our business with a chemical product business and a civil engineering & construction business run as two main lines of business. With the former, we operate as a trading company specializing in chemicals and, with the latter, our affiliated construction companies play major roles in the maintenance, repair, and refurbishment of social infrastructure and architectural stock market.

For the purpose of continuous profit generation and business expansion, Konishi has been strengthening its core business and discovering and nurturing markets in peripheral areas by strengthening group collaboration, building a strong production and logistics system, and speeding up R&D. In recent years, Konishi has positioned its “Construction Business” which consists of affiliates, as its third pillar after "Bond" and "Chemical products" and has been promoting the strengthening of this business.



Steel Plate Reinforcement Continuous Fiber Sheet Reinforcement Protection of Concrete Surfaces

[Contact Information for this Release]

Contact : Nakatani, Corporate Planning Department, Konishi Co., Ltd.

Mail : konishi-ir@bond.co.jp